



**STAY POSTED!**

 [www.scrreen.eu](http://www.scrreen.eu)

 [@SCRREEN\\_EU](https://twitter.com/SCRREEN_EU)

# Solutions for CRITICAL Raw materials - a European Expert Network

Stéphane BOURG

**30**  
MONTHS  
—  
**30**  
PARTNERS  
—  
**15**  
COUNTRIES

**SCRREEN PROJECT**

**TO STRENGTHEN EUROPE'S CRITICAL RAW MATERIAL STRATEGY**

# SCRREEN, a Consortium at the services of the Experts



30 month , 3M€  
30 Partners  
+ 60 in the wide network



SCRREEN is supported by key associations, initiatives, industry, SMEs and consultancies in the sector - these stakeholders will also be involved in the project's Expert Network.

**EU Initiatives:** EIT-RawMaterials, E-MRS, ERAMIN2, ETP-SMR, SusChem, EUMAT, EURELCO

**European Associations:** EUROMINES, EUROMETAUX, EFG, PROMETIA, ECGA, EARN, CIME Cluster, Recharge, WEEE Forum

**International organisations:** AMIRA, CMI, IMA

**Public Authorities or their representatives:** Lapland Regional Council, French Ministry of Environment, IGMNiR, EDM, SIEMCALSA

## SCRREEN PROJECT TO STRENGTHEN EUROPE'S CRITICAL RAW MATERIAL STRATEGY

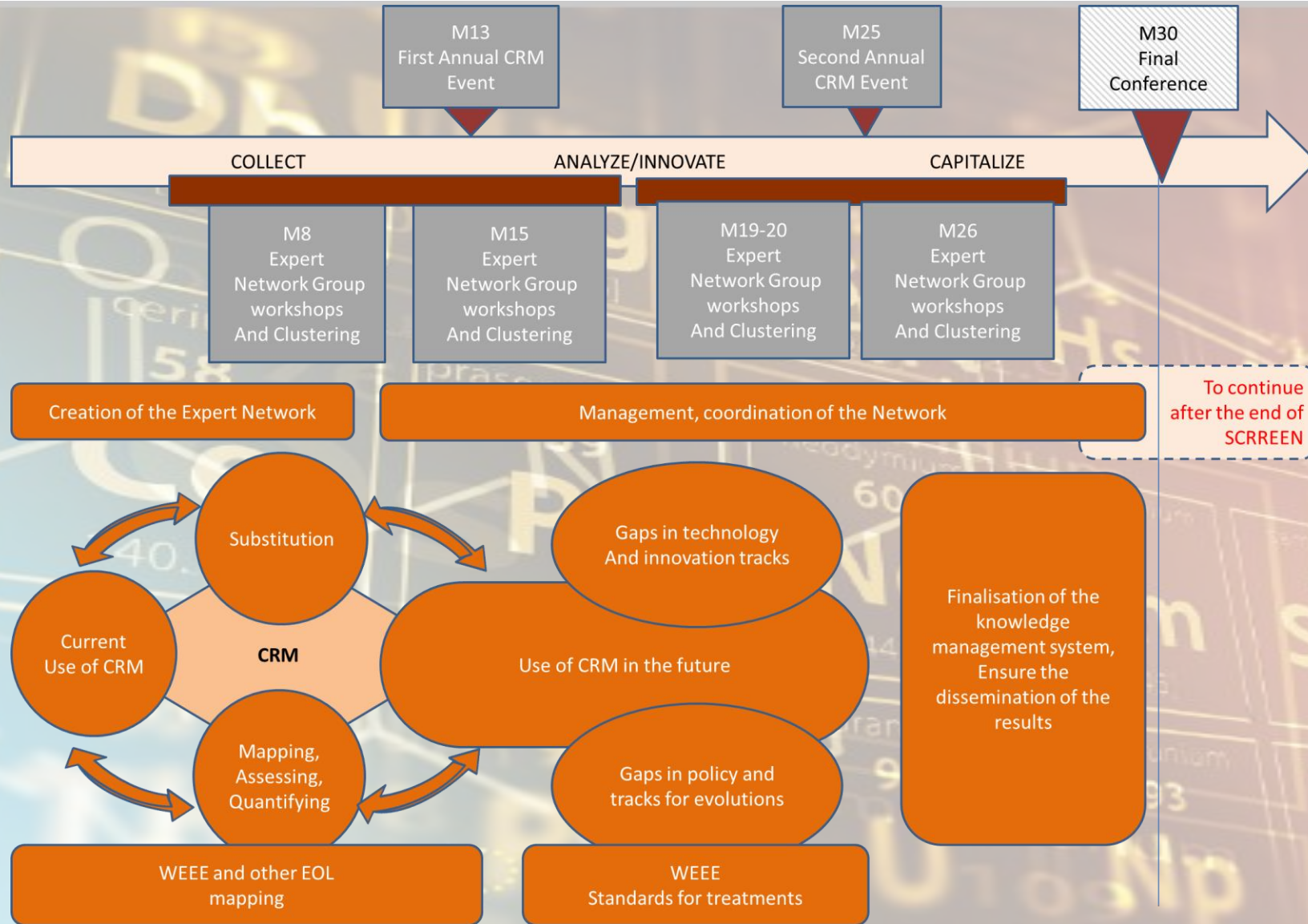


### OBJECTIVES

- ➔ **Establish an EU Expert Network that covers the whole value chain for current and future critical raw materials.**  
It will build on existing structures and initiatives, as well as international collaboration, and will aim at clustering related EU projects and initiatives.
- ➔ **Analyse pathways and barriers for innovation, and identify the solutions for overcoming them.**  
These should enable technology breakthroughs, substitution options, new resources (primary, secondary, urban mines) etc.
- ➔ **Study the regulatory, policy and economic framework for the development of these technologies and propose ways to move forward, while looking at end of life issues.**  
The objective is to lift barriers and ultimately boost the creation of new markets in Europe, inducing job and wealth creation.
- ➔ **Identify the knowledge gained over the last years and ease the access to these data widely and efficiently, beyond the project.**  
SCRREEN will collect and organise all of the data generated in other projects, associations, initiatives etc, and develop a knowledge data portal.



# Work Plan



# Value Chain Analysis - a 3D approach

**EXPERTS  
GROUPS**

**Resources**  
**Production**  
**Substitution**  
**Market**  
**Policy**  
**Circular Economy**

**Electronic components**

**Magnets**

**Catalysts**

**Batteries**

**Automotive**

**Aerospace**

**Energy**

**IT/Appliances**

**VALUE CHAINS**



- ❖ **The network is under establishment**
  - **key associations are invited to Expert Groups Meeting**
  - **the stakeholder list is updated according to needs**
- ❖ **Primary and secondary resources have been identified. Update ongoing following the new list.**
- ❖ **Current use of the CRM identified (report published)**
- ❖ **Production technologies of the CRM are being analyzed**
- ❖ **Substitution profiles and strategies are almost completed.**
- ❖ **Identification of relevant business and policy issues for Europe pertinent to CRMs undergoing**
- ❖ **The EU CRM Knowledge Portal will open soon**

**A large stakeholders consultation will be organized in 2018, if you want to participate and complete our stakeholders list, contact us!**

**The same kind value chain analysis was done last year on refractory metals (W, Nb, Mo, Re, Ta). You can find the reports on [www.prometia.eu/msp-reframe/](http://www.prometia.eu/msp-reframe/)**

# Thank you!

## Get in touch for more information!



All of the reports produced in the project will be available for download on the SCRREEN website.



Project coordinator: Stephane Bourg, CEA  
Contact us: [contact@screen.eu](mailto:contact@screen.eu)



Visit our website: [www.screen.eu](http://www.screen.eu)



Follow us on Twitter!  
[@SCRREEN\\_EU](https://twitter.com/SCRREEN_EU)